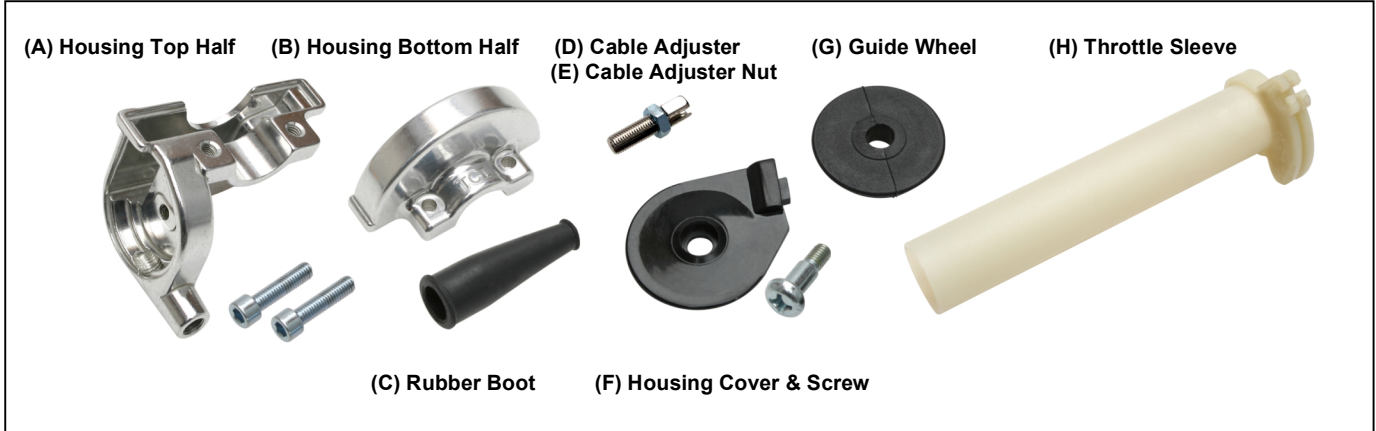




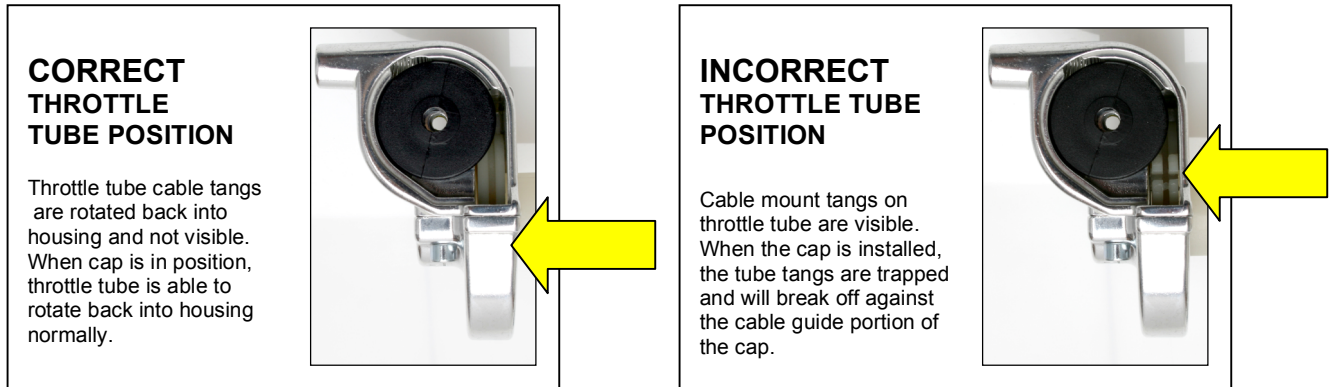
Motion Pro, Inc.
867 American Street
San Carlos, CA 94070
Tel 650.594.9600 Fax 650.594.9610
www.motionpro.com

INSTRUCTIONS

Turbo™ THROTTLE P/N 01-0057



1. Remove the cover screw and lift housing cover (F) and guide wheel (G) off. Remove two socket head screws and separate housing halves (A & B) and throttle sleeve (H).
2. Insert cable through hole in housing top half (A). Wrap around guide wheel (G) and push guide wheel back in place.
3. Insert cable ball end into slot in throttle sleeve drum and place throttle sleeve (H) into housing top half (Note proper position of throttle sleeve in images below). Set housing bottom half (B) on and check that the sleeve rotates freely with definite stop at throttle off position.



4. Insert two socket head screws loosely and slide assembly over end of lightly greased handlebar. The end of the sleeve should be even with the end of the handlebar. Set housing cover in place and tighten the cover screw. Turn assembly to desired position and tighten socket head screws evenly while retaining equal spacing (gap) between the housing halves at both sides of the handlebar. Do not exceed 26 inch pounds (3 Nm). Normally the correct position is with the cable running across the top and forward of the handlebar.

Parts Available Individually:
 (C) P/N 00-0869 Rubber Boot
 (D) P/N 00-0956 Cable Adjuster
 (E) P/N 00-0877 Cable Adjuster Nut
 (H) P/N 01-0089 Throttle Sleeve

Optional
 P/N 01-0072 Throttle Sleeve
 (to open Mikuni VM40mm and larger)